



ELECTRONIC FASTENERS



SPECIAL PARTS & WELD SCREW



CHANNG CHIN INDUSTRY CORP.

INTRODUCTION

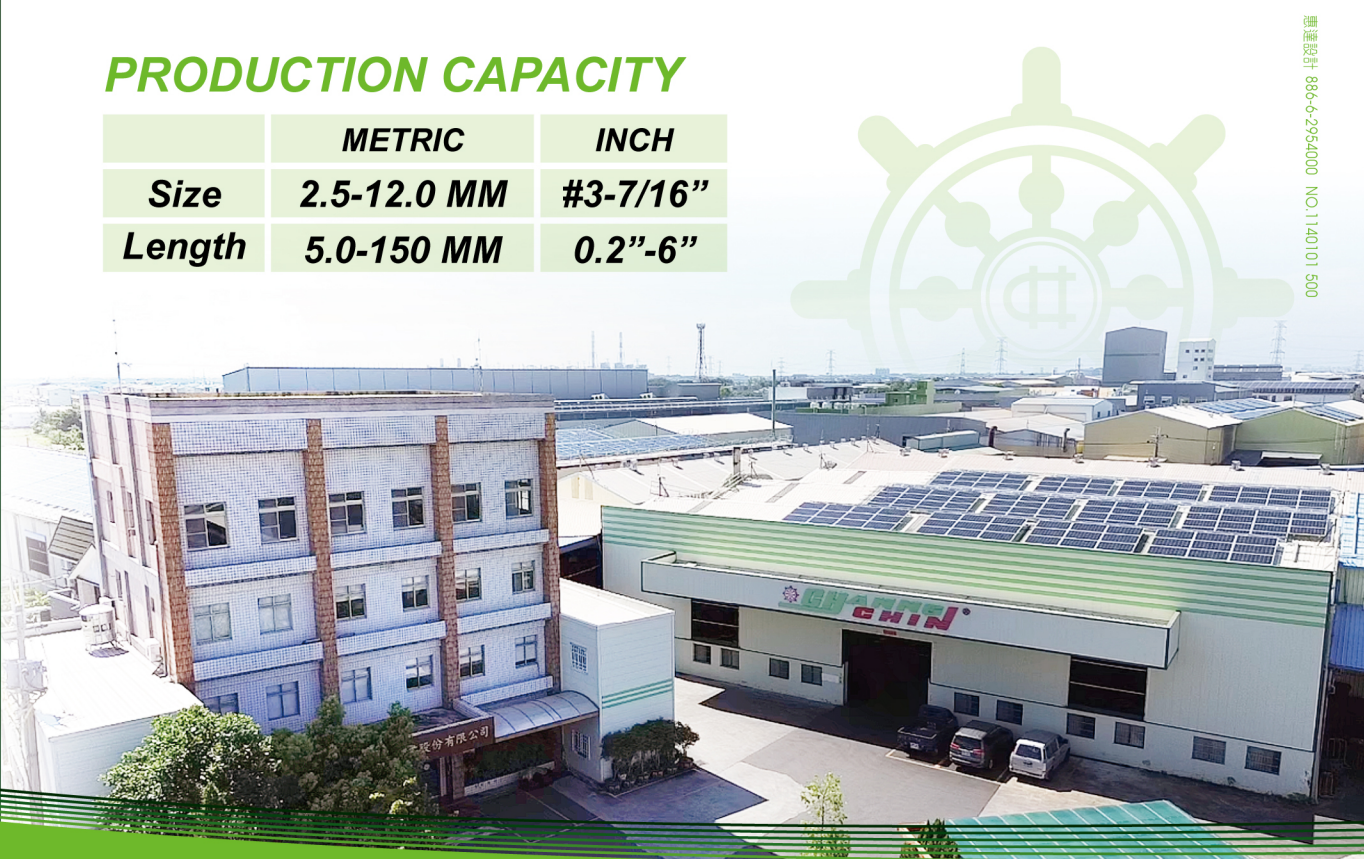
Founded in 1972, CHANNG CHIN has built a strong reputation as a manufacturer of high-quality screws, certified by IATF 16949, ISO 14001, ISO 17025, and EN 14592/14566. Our diverse product range includes machine screws, tapping screws, thread rolling screws, HI-LOW screws, SEMS, weld screws, and patented MATHread®. With a commitment to exceptional quality and competitive pricing, we develop well reputation among clients in the field. Our in-house heat treatment processes enable us to meet customer delivery schedules with precision. Supported by a dedicated team of experienced employees, CHANNG CHIN possesses high flexibility in manufacturing per print and timely distribution to the globe.

PRODUCT CATEGORY:

Machine Screws, Tapping Screws, SEMS, High-Low Screws, Chipboard / Drywall / Windows / Self-Drilling Screws, Micro Screws, Auto Screws, Thread Forming Screws, MATPoint®

PRODUCTION CAPACITY

	METRIC	INCH
Size	2.5-12.0 MM	#3-7/16"
Length	5.0-150 MM	0.2"-6"



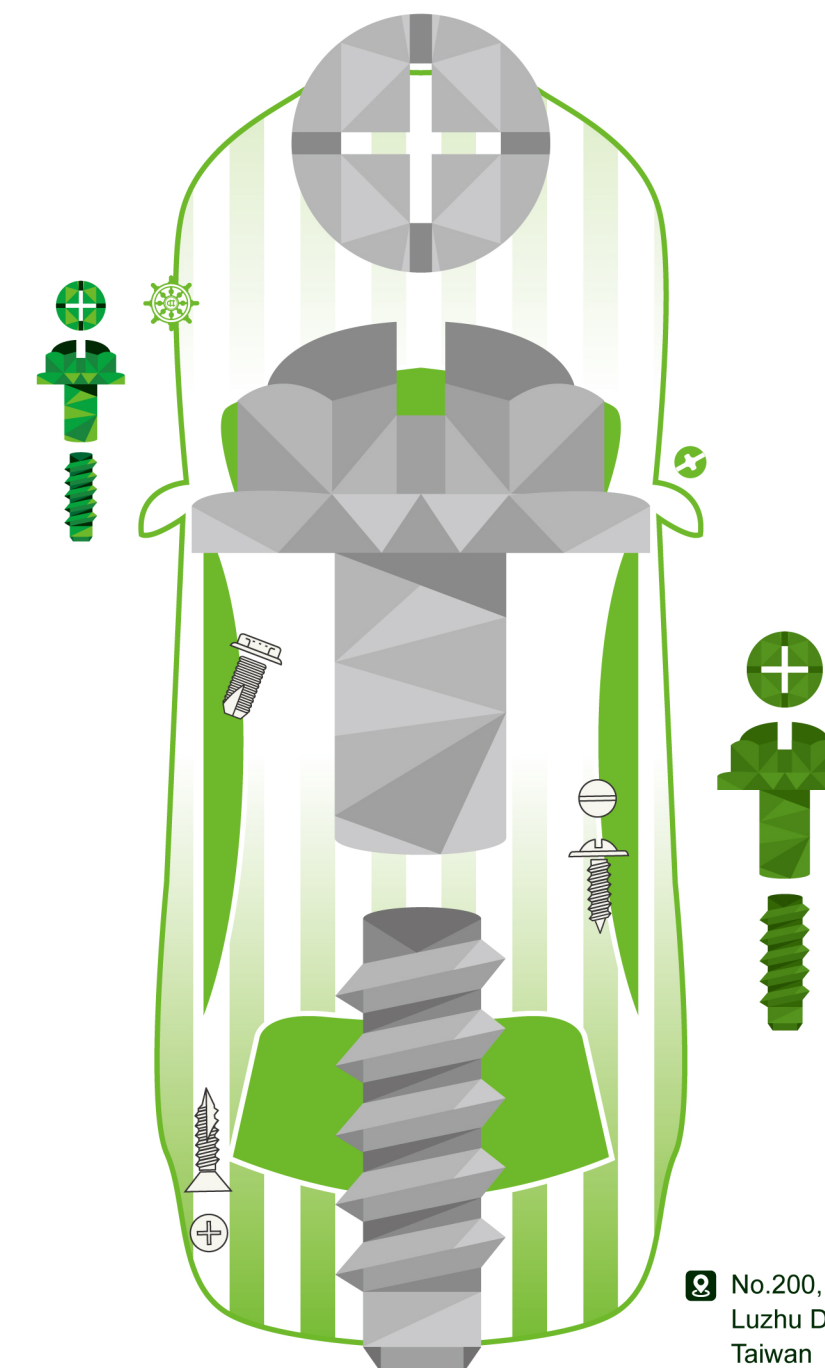
垂直設計 886-6-2964000 NO.1140101 500



SINCE 1972

CHANNG CHIN INDUSTRY CORP.

常進工業股份有限公司



IATF 16949



ISO 14001



EN 14592 / EN 14566



ISO 17025



www.channg-chin.com.tw

No.200, Lane 275, Shun An Road,
Luzhu Dist., Kaohsiung City 821010,
Taiwan

www.channg-chin.com.tw

service@channg-chin.com

MAThread®

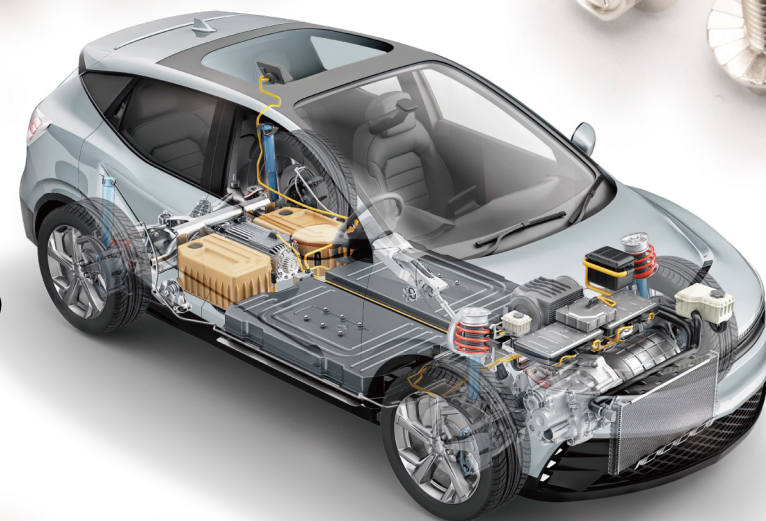


MAThread®

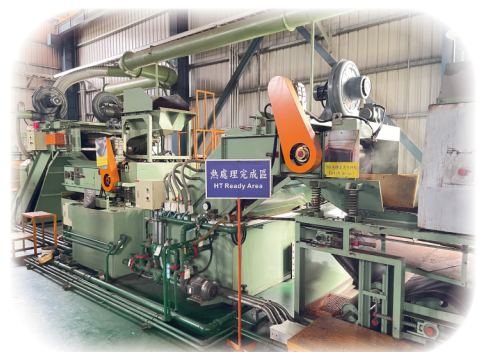
MACHINE SCREW & TAPPING SCREW



T/T THREAD SCREW & PT THREAD SCREW & HI-LOW SCREW



ASSEMBLY PARTS & SEMS



- ✓ **Build-to-Print Manufacturing**
- ✓ **Assured Quality**
- ✓ **Additional Processing**
- ✓ **Reliable Delivery**
- ✓ **In-house Heat Treatment & De-phosphate**



CONSTRUCTION & FURNITURE FASTENERS

